

Kuker-Ranken

A TRADITION IN PRECISION



MEET THE LEICA GS05 GNSS RTK ROVER

Tilt all day. Lightest GNSS Smart Antenna:
Precise positioning without added weight.

The GS05 features Leica Geosystems' proven tilt compensation, which is calibration-free and immune to magnetic disturbances.



- when it has to be right



Lasers - Professional Grade Lasers



Leica Rugby Lasers CLAx / CLH Series

Rugby CLH - Use it as a simple to operate, one-button horizontal laser for concrete and formwork leveling, height checking and transferring, and land levelling application. Upgradeable to manual slope or semi-auto grade functionality.

Rugby CLAx - The Leica CLAx series of professional dual grade lasers blend high performance, flexible operation, and a robust design to increase productivity on the construction site. Offering manual and digital dual grade options, slopes ranging from 8 to 15%.

- when it has to be right

We Offer Rentals!
Try before you buy!



Leica CLH Lasers



Leica CLAx Lasers



Leica Rugby Smart Adapter



Leica CLC+ Combo

Leica CLH Lasers - Horizontal (All include Battery, Charger & Carry Case)

6012274	Rugby CLH Basic*	Horizontal
6012276	Rugby CLH/CLX200*	Manual grade up to 8%
6012277	Rugby CLH/CLX300*	Semi auto single grade up to 8%
6012278	Rugby CLH/CLX400*	Semi auto dual grade up to 8%

Leica Rugby CLAx - Professional Dual Grade Lasers

6018539	Rugby CLAx 250	High-accuracy dual slope up to 8%
6018541	Rugby CLAx 550	Adaptable all-rounder 8% digital dual slope, self-levelling.
6018543	Rugby CLAx 700	Fast, precise and flexible digital dual grades up to 15%

Accessories & Upgrades

986299	CLC Combo+ Receiver & Remote, Bracket and Charger
789922	Rod Eye 120 Basic Receiver with Bracket
789923	Rod Eye 140 Classic Receiver with Bracket
789924	Rod Eye 160 Digital Receiver with Bracket
835666	Rod Eye Receiver Bracket
864849	Li-Ion Battery Pack for Rugby CLH/CLAx/CLI Lasers Only
790417	A100 Li-Ion Charger
864855	Smart Adapter for Vertical Operation and Wall Mounting
790434	A240 Manual Slope Adapter

Functionality Upgrades Sales Permanent

6012288	CLH Upgrade: CLX 200 Single, Single manual grade, 8%, no display
6012289	CLH Upgrade: CLX 300 Incl. CLX 200 plus Dial-in Single grade, Semi-auto to 8% w/display
6012290	CLH Upgrade: CLX 400 Incl. CLX 300 plus Dial-in Dual grade, Semi-auto to 8% w/display

Rugby Laser Specs.

	CLH Series	CLAx Series
Warranty	5Y/2Y knockdown	5Y/2Y knockdown
Grade Capability	8%	15%
Self levelling Range	± 6°	± 6°
Self levelling Accuracy	± 1/16" at 100 ft	± 1/16" at 100 ft
Operating Range w/Combo, RE140/160 (diameter)	1476 ft	1476 ft
Remote Range (diameter)	1000 ft	1000 ft
Battery Operating Time	50 h	50 h
Battery Charging	5 h (full charge)	5 h (full charge)

Lasers - Rotating



Leica Construction Lasers - Rugby Rotating Lasers

Ask About Rentals!



Rugby 610 Laser



CLC Combo+



Battery Pack



Receiver Bracket

Leica 600 Series Lasers - Self Leveling Horizontal and Vertical options

Rugby 610 package	Horizontal - One button, single axis	*Packages include: rod-eye receiver, battery pack, charger (640 only), remote (640G only) free aluminum tripod. 3 Year warranty with online registration.
Rugby 620 package	Horizontal with manual grade control	
Rugby 640 package	Horizontal & Vertical - Red Beam	
Rugby 640G package	Horizontal & Vertical - Green Beam	
Rugby 680 package	Semi-automatic, dual grade laser	

Options & Accessories

789922 Rod Eye 120	Great receiver with bracket for all general construction.
844745 Rod Eye 120G	Designed to capture the green beam
789923 Rod Eye 140	Classic standard receiver with bracket & with arrow display
789924 Rod Eye 160	Great receiver with bracket and digital readout
835666 Receiver Bracket	Bracket for receivers 120,120G,140,160,180 & CLC
790352 RC400	Remote Control Rugby 640/640G/840
789933 RC800	Remote Control Rugby 800 Series
790434 A240	Manual Slope Adapter
732791 Target	Magnetic Red Ceiling Grid Target
849525 A210G	Green Ceiling Grid Target
790415 A600	Li-Ion Battery Pack (for Rugby 600 series)
790416 A800	Li-Ion Battery Pack (for Rugby 800 series)
790417 A100	Li-Ion Charger (for Rugby 600/800 series)
790419 A150	Alkaline Pack (holder for rugby 600/800 series)
5301-25-BLK	Seco Aluminum Tripod with quick clamps, black hardware up to 64 inches



Rugby Laser Specs.	610	620	640	640G	680
Functionality	Self-leveling horizontal, One button laser	Self-leveling horizontal, & manual slope in one axis	Self-leveling horizontal, vertical, 90° & manual slope in dual axis	Self-leveling horizontal, vertical 90° & manual slope in dual axis	Self-leveling horizontal, dial-in grade in dual axis
Self levelling Range			± 5°		
Grade Range	-	-	-	-	± 8° DG
Self levelling Accuracy	± 3/32" at 100ft	± 3/32" at 100ft	± 3/32" at 100ft	± 3/32" at 100ft	± 1/16" at 100 ft
Scanning Modes	-	-	10°, 45°, 90°	10°, 45°, 90°	-
Remote Range					
RE120 / 120G	2,600 ft	2,600 ft	1,650 ft	1,300 ft	2,950 ft
RE140 / 160	3,600 ft	3,600 ft	2,000 ft	-	3,600 ft
Battery life (alkaline / li-ion)			60 h / 40 h		
Warranty	Manufacturer's Warranty: No Cost period: 3 years			5 years no cost	



Leica Pipe Lasers - Piper 100 and 200 Series

We Offer Rentals!
Try before you buy!



Piper 100 Package



Piper 200 Green beam

Leica Piper 100 Pipe Laser Package - The Leica Piper Series is designed to enhance productivity and precision for all your pipe alignment tasks. With a solid performance whether you're working over the top, in the manhole, or directly in the pipe, these tools ensure you can execute your work with confidence. The rugged aluminum housing protects the equipment from harsh job site conditions, making it reliable for various environments.

Leica Piper 100 Package includes (748704) - Piper 100, remote, target, holder, Li-ion battery. Charger, car adapter, 150 mm (6") feet, and carrying case.

Leica Piper 200 Green Beam Series

The Piper Green Series enhances visibility with four times improved laser clarity, resulting in higher leveling accuracy. This allows you to work effectively at greater distances, even in bright conditions. Commonly used in water and sewage applications, the Green Series also enhances usability in these scenarios.

Leica Piper 200 Package - Great for second-day setups. The Alignmaster function seeks and finds the target. Includes same items as Piper 100 package.

748710 Piper 200 Package with Alignmaster

Leica Piper Green Beam Pipe Lasers - includes same items as Piper 100 package.

6016058 Leica Piper 100G/3R with 150mm ft, IR remote, target, charger and battery

6016958 Leica Piper 200G/3R with Alignmaster 150mm ft, IR remote, target, charger and battery

Technical Data

Piper 100 / 200

Laser Type	635 nm (red), laser class 3R / 520nm (green), laser class 3R
Laser output	4.75 mW maximum
Working range / Grade range	200 m (650 ft) / -10% to +25%
Self-leveling range	-15% to +30%
Line movement	6 m at 30 m (20 ft at 100 ft)
Battery type*	Lithium-Ion, 7.4 V/3.8 Ah
Operation/charge	40 h/4 h
Operating temperature range	-20°C to +50°C (-4° to +122° F)
Dimensions (diameter x length)	96 x 267 mm (3.8 in x 10.5 in)
Weight / Construction	2 kg (4.4 lbs) / Cast aluminum
Wireless remote	Front, up to 150 m (500 ft) – Back, up to 10 m (35 ft)

Leica Piper Accessories

746157	IR Remote Control
1009891	PT-100 Target Plate Red Assembly
746158	Trivet Assembly with mounting bracket
746159	Mounting Bracket
746161	Foot 6" / 150mm (4 required)
746162	Foot 8" / 200mm (4 required)
746163	Foot 9" / 225mm (4 required)
746164	Foot 10" / 250mm (4 required)
746165	Foot 12" / 300mm (4 required)



IR Remote



PT-100 Target Plate



Piper Feet



Trivet Assembly




Automatic Levels



Automatic Levels - Nitrogen filled, IP57 (submersible), 3 Year Warranty with registration.*

The Leica NA700 levels defy the toughest of building site environments. Save time and money with no need for regular checks in the workshop or constant readjustment. When it comes to extreme robustness and optimum measuring accuracy, the Leica NA700 levels are hard to beat.

- when it has to be right

	NA720 (641982)	NA724 (641983)	NA730 plus (833190)	NA2 (352036)
Magnification	20X	24X	30X	32X
Telescope		Upright		Erect Image
Nitrogen filled		Yes		
Lens diameter	30mm	36mm	40mm	45mm
Horizontal drive		Both sides, endless		
Accuracy	2.5mm	2mm	.7mm	.7mm
IP rating		IP57 (submersible)		IP53



PROTECT
by Leica Geosystems

Lifetime Warranty	3 Years No Cost*	Certified Quality	Swiss Technology
-------------------	------------------	-------------------	------------------

PROTECT is subject to the Leica Geosystems International Limited Warranty and the General Terms and Conditions for PROTECT, which you can find at: www.leica-geosystems.com/protect.

*Available through free online registration within 8 weeks of purchase.

Machine Receivers



The Leica MC200 Depthmaster is an ideal tool for any kind of height control for excavators. Simply turn the excavator dipper into an integrated measuring stick without having to leave the cabin. It is simple to set-up and can be used with any rotating laser. Mounts either to a standard excavator or backhoe - even levelling work can be done with the same sensor.

- Ultra-bright LED displays (front & back)
- 100 % waterproof
- Constant accuracy band control



The LMR 360 offers accurate grade information for all visual machine control applications. Large 360° detection window picks up any rotating laser, from any angle. Built-in vertical indicator monitors angle of the stick, signaling if it's plumb or under- or overextended. Vertical position ensures consistent and accurate grade readings, saving money by reducing over- or under-cutting.

- Accurate grade control
- Built-in vertical indicator
- Waterproof

- when it has to be right

Leica Machine Receivers - Highly accurate grade control (All have 100' remote range)

742440	MC200	Depthmaster with Magnetic Bracket - 650' range, NiCd Rech.
742438	MC200	Depthmaster with Clamp-on Bracket - 650' range, NiCd Rech.
773569	LMR240	240 Machine Receiver, Mag. - 750' range , 3X AA batteries
6003354	LMR360R	Receiver with clamps, charger, NiMH batteries, case and manual
6003355	LMR360R	Receiver with magnetic brackets, charger, NiMH batteries, case and manual

Lasers - Disto Handheld Laser Distance Meters



Leica Disto Lasers

Three-Year warranty after online registration.



Model	Part Number	Description	Bluetooth	Accuracy	Range
X6 P2P Package		Point-to-Point Measuring			
X6	950909	Extremely rugged handheld measuring	V5.0 Tech.	1/16"	820'
D5	950908	Indoor and outdoor laser measuring	V5.0 Tech.	1/16"	660'
X3	850834	Designed for tough, rugged conditions	V4.0 Smart	1/16"	500'
D2	838725	Compact device - long range	V4.0 Smart	1/16"	330'
E7100i	812806	Pocket sized for added convenience.	V4.0 Smart	1/16"	200'
D1	846805	Professional laser measuring for all	V4.0 Smart	1/8"	130'

Accessories for DISTO™ and Lino



DST 360 + TRI120 (848783)

The DST 360 is an intelligent adapter that transforms your DISTO X3 or X4 into a real measurement station, allowing you to accurately measure distances between any two points—what we call Point to Point measurement—from one position. For use with the Disto X3 or X4.



DST 360 Tripod Adapter (848783)

The intelligent tripod adapter Leica DST 360 is the ideal complement for the Leica DISTO X3 and X4. It enables the measurement of a distance between any two points, the capturing of 2D and 3D data for further processing in CAD programs and the precise targeting of an object. The sturdy metal housing ensures optimum robustness and consistently accurate measurement results. Use with the Disto X3 or X4.



DST 360-X Adapter (946095)

The intelligent tripod adapter Leica DST 360-X is the ideal complement for the Leica DISTO X6. It enables the measurement of a distance between any two points, the capturing of 2D and 3D data for further processing in CAD programs and the precise targeting of an object. The sturdy metal housing ensures optimum robustness and consistently accurate measurement results. For use with the Disto X6.



TPD 100 Kit (6012352)

The target plate for improved targeting with digital Pointfinder on long distances. The kit with pole and bubble enables measurement on landmarks and performance of basic surveying tasks with a Leica DISTO. For use with all distos.

Tri70 Tripod	794963	Adjustable Tripod 15-3/4" to 45"
Tri100 Tripod	757938	Adjustable Aluminum Tripod
Tri105 Tripod	975728	Adjustable Aluminum Tripod
Tri200 Tripod	828426	Rugged Aluminum Tripod w/case
GLB30 Glasses	780117	RVL80 Receiver 838757
GZM3 Target	820943	GZM26 Target 723385



GZM3 Target



GZM3 Target



GLB30 Glasses



Tri100



Tri105



Tri200

Lasers - Lino Lino and Point Lasers



Leica Lino Technology with Red & Green Lasers

Advanced line and point laser technologies in combination with smart adapters are fit for all alignment, leveling or plumb applications. Excellent beam visibility and flexible power sources supported by mounts that place the line where it needs to be.

Green lasers are four times more visible to the human eye if compared to red lasers. This means green lasers are more suitable for longer distances and have increased visibility in bright environments.

Leica Lino Lasers

Set-up, switch-on and start working.

Leica Lino lasers project lines or points to millimetre accuracy, making it easier for you to get the job done right. All Leica Lino lasers are self-levelling, so you can set-up, switch on and start working.

Multi-purpose. Ideally suited for leveling and aligning wall mounts and location transfers.

Useful for vertical or horizontal transfers or for 90° lay-outs.

Three-Year warranty after online registration.

Leica Lino L6R and L6G

The Leica Lino L6R and L6G self-leveling **red** and **green** multi-line lasers. Working range up to 230 feet in diameter.

Project 360° horizontal and vertical transfer lines around the workspace. Line intersections define transfer points from wall-to-wall or floor-to-ceiling. IP54 rating, great for jobsites. Multi-directional alignment.

L6Rs 918976 base **L6Gs** 918977 base
L6R 912969 package **L6G** 912971 package

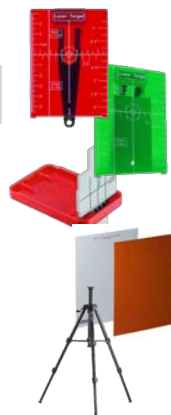


Model	Part No.	Description	Leveling accuracy	Range
L4P1	834838	Powerful & versatile 4 lines and 1 plumb point	± 0.2 mm/m	50'
P5	864427	Forget about plumb bobs or strings. 5 points	± 0.2 mm/m	100'
L2P5G	864435	Easy to see. 2 green lines and 5 green points.	± 0.2 mm/m	115'
L2P5	864431	Combining 2 red lines and 5 red points	± 0.2 mm/m	82'
L2G	864420	Cross line laser featuring 2 green lines.	± 0.2 mm/m	115'
L2	864413	Easy to use with 2 red lines.	± 0.2 mm/m	82'

Accessories for DISTO™ and Linos



Description
Laser GLB30 Red Glasses Kit (780117)
Laser GLB10R Red Glasses (834534)
Laser GLB10G Green Glasses (772796)
Leica RVL Line Laser (838757)
Leica RGR 200 Red and Green Laser Receiver (838757)



Description
Red Magnetic Target Plate (758831)
Green Target Plate (823195)
GZM3 Target Plate (820943)
GVM26 Target Plate (723385)
TRI70 Telescoping Tripod 16 - 45 inches with 1/4-20 threads and carry bag (794963)



Our most popular heavy duty field supplies for daily work.



Kuker Ranken Hand Levels

Kuker-Ranken 2x Hand Levels are hand-finished for smooth and accurate operation with etched glass prisms and precision ground lenses. Includes leather case.



Kuker Ranken Rainier Vest

Our Rainier Vest is made of Urethane Coated 1000 Denier Cordura® Nylon. This is a tough, durable, long lasting fabric that can withstand all weather. Rugged, double stitched, Class 2.



Party Chief Safety Vest

PC15X Party Chief Survey vest with full reflective "X" BACK striping design. ANSI 107/CSA Z-96 compliant for use in the US, Canada and all across North America. Features: heavy duty 500/600D material, hammer hangers and padded shoulders.



Seco 8265 Safety, Class 2 Utility Vest

Meets ANSI/ISEA Class 2 requirements. Made of durable polyester, brass grommets, heavy duty webbing and trim. Sizes Medium to 4X. Fluorescent Orange.



Hard Hats - MSA

Front brim, standard hard hats. Superior top impact protection. Built for use by utilizes, oil, gas and other areas where head protection is needed. Made of durable polycarbonate. White, Yellow, Orange, Blue and Pink



The MAG Nail has also been coated with an environmentally friendly zinc and clear chromate to resist corrosion. MAG Nail is your replacement survey nail for PK or Parker Kalon.

247500	3/4" x 1/8"	100/bx
241000	5/32" x 1"	100/bx
341250	3/16" x 1-1/4"	100/bx
241500	1/4" x 1-1/2"	100/bx
242000	1/4" x 2"	100/bx
242500	1/4" x 2-1/2"	100/bx
243500	3 1/2" x 1/4"	100/bx

ChrisNik
LEAVING OUR MARK ON THE WORLD



Hand Tools

Scribes

KCS	Premium Scribe with magnet
KPS	Premium Scribe
KGS	Giant Scribe



Machete's

33683	22" Machete Blade
33684	24" Machete Blade
33650	22" Machete Sheath
33670	24" Machete Sheath



OrangeTops

FP-18	18" Extra Rugged Frost Pin
-------	----------------------------

LimeTops

17-GAD18	18" GAD
17-FPY18FY	18" Frost Pin
17-MCP32-FH	32" Manhole

RedTops

4418GD	18" GAD
4418RT	18" Frost Pin
4432DP	32" Manhole Pick

Heavy Tools

17-EWB3-4LB	4lb. Sledge Hammer
E3-16S	16oz. Rip Hammer
E3-22p	14oz. Rock Pick



60-D Nails Heavy duty 60-D bright 6" common nails. Sold in bundles of 25 or 50lb. Boxes. (approx. 500)

Grade Checking

Adjustable - Swedes White Set of 3 ZipLevel PRO-2000

Unlike a rotary laser, ZIPLEVEL lets you truly work alone to quickly and easily level and read elevations directly in unmistakably clear digits.



Plumb Bobs

6000-012	Seco Plumb Bob 12oz.
6000-014	Seco Plumb Bob 14oz.
6000-016	Seco Plumb Bob 16oz.
6000-018	Seco Plumb Bob 18oz.
6000-024	Seco Plumb Bob 24oz.



Field Supplies



Copy or laser print your own all-weather forms: Charts, Maps and Worksheets on patented Rite in the Rain All Weather Copier paper. 200 pages.

Part#:

- #8511 8-1/2x11 50/sheets
- #8517 11x17 200/sheets

- 301FX Stapled Notebook - Field Flex - Transit 3/pk
- 311FX Stapled Notebook - Field Flex - Level 3/pk
- 351FX Stapled Notebook - Field Flex - Field 3/pk
- 391FX Stapled Notebook - Field Flex - Journal 3/pk
- 300F Bound Book - Fabrikoid Cover - Transit
- 310F Bound Book - Fabrikoid Cover - Level
- 350F Bound Book - Fabrikoid Cover - Field
- 390F Bound Book - Fabrikoid Cover - Journal

Rite in the Rain

Durable Clicker Pens Write on wet paper, upside down and won't leak.

Part#

- #OR97 - Orange Pen, Black Ink
- #BK13 - Black Ink
- #97B - Blue Ink
- #97 - Black Ink



Mechanix Wear Gloves

Designed for Mechanics, construction workers, trade professionals, service members and law enforcement. Provides protection from Cuts, Abrasion, Impact, Heat & Liquids. Utility, Nitril, Durahide, HI-Viz and M-Pact.



Komelon Measuring Tapes

use a vertically integrated manufacturing process utilizes the highest grade materials to insure an accurate, long-lasting tool that is guaranteed to withstand the harshest of work environments.



Aervoe Survey Marking Paint

A superior upside-down marking paint designed for survey marking. Clear, Red, Yellow, Blue, Green, Orange, Black, White, Silver, Purple, Red-Glo, Orange-Glo, Green-Glo, Yellow-Glo, Blue-glo and Pink-Glo



Part No.	Descr.
SL2812	5/8"x12' Ft/Inches
SL2825IE	1"x25' Inch/Engr.
7125IE	1"x25' Inch/Engr.
425IEHV	1"x25' Inch/Engr.
433IEHV	1"x33' Inch/Engr.
6611	1/2"x100' Inch/Engr.
6622	1/2"x200' Inch/Engr.
6633	1/2"x300' Inch/Engr.



Seymour Ground Marking Paint

A solvent or non-solvent ground marking paint with fast-drying properties, vivid colors and non-clogging spray nozzle.



Presco Roll Flagging

-20F temperature resistance for superior weathering qualities. 2.0 mil for Standard Colors and 3.0 mil for Glo colors. Texas Grade - standard & glo Red, blue, yellow, orange, green, white, red-glo, yellow-glo, orange-glo, green-glo, blue-glo, pink-glo & lime-glo

Wood



Part No.	Descr.
2x2x6	6" Hubs 25/bndl
2x2x8	8" Hubs 25/bndl
2x2x10	10" Hubs 25/bndl
2x2x12	12" Hubs 25/bndl
2x2x18	18" Hubs 25/bndl
2x2x24	24" Hubs 25/bndl
Lath 24	24" Lath 50/bndl
Lath 36	36" Lath 50/bndl
Lath 48	48" Lath 50/bndl
1x2x18	18" Stakes 50/bndl
1x2x24	24" Stakes 50/bndl
24"	Wood Lot Board 25/bndl



Stake Chasers

Our stake chasers are designed for maximum visibility and durability. 6" with steel loop. White, orange, yellow, red, blue, pink, green-glo, orange-glo

Smi-Carr, Inc.

Surveying & Construction Accessories



92XXX Series 98010 Series

Part Number	Description
92001	8' Fiberglass Rods 10ths, Square
92021	13' Fiberglass Rods 10ths, Square
92041	16' Fiberglass Rods 10ths, Square
92031	20' Fiberglass Rods 10ths, Square
98010*	25' Fiberglass Rod 10ths, Rectangular-Oval, Surveyors Series



Features rectangular shape with rounded back corners for better gripping. Scale width is graduated to fill the entire face of the rod. Strong fiberglass, waterproof, corrosion-resistant and non-conductive. Features a 1/4 x 20 female adapter in the top section.

*98010 is a rectangular-oval shape which allows for wide, glare-resistant and wear-resistant scales

Direct Reading (Lenker Style) Grade Rods

These Lenker Style Grade Rods feature a moveable tape face allowing you to set the actual benchmark elevation, or any elevation, above or below the bench into the rod



Part#	Description
B-LCA-C	Leica Bracket for Leica CLC Detectors
B-LT	AGL LS-100, Apache Lightning 2, Twister, Futura, Laser Reference R8, Leica RE-Plus, Sokkia MLR, Trimble HR250, 320, 350
B1-LA	Apache Cyclone, Leica RE Pro/Classic, Topcon LS100D
UB-1	Universal Bracket—Virtually all detectors
B1	AGL LS-4, Apache 34/44 Lightning, CST Berger LD100/120/200/400, DW LD18, Laser Alignment 4/5/6/7/8, Laser Reference R4/R5/R7, Nikon3, DS-30, LS-6, Sokkia, Spectra, Trimble HR200
B1-LS70/80	Futura CR3, Topcon LS30, LS50. LS70, LS80, LS1
B-Storm	Apache Storm, Future CR4, Leica RE/Digital
1000-1301	10' Lenker Rod Black Cordova Carry Bag



Replacement Tape for GR1000 1000-1023

Replacement Tape for GR1000T 1000-1026

GR1000
10' Direct Reading Rod
Feet, Tenths, Hundredths
With cut & fill

GR1000T
10' Direct Reading Rod
Feet, Tenths, Hundredth
LASERLINE MFG, INC.

Nedo 660050
Leica Prism adapter

Nedo 061837
5/8" to 3/8" Tripod Adapter

Nedo 660030
Tripod Dolly Lockable/Steerable

nedo
Precise surveying and measuring

Nedo 210710
Elevating Tripod w/4 extension tubes

726-831 Leica GST101
Heavy Duty Wood Tripod Extends to 65"

Dutch Hill GT2000A
Fiberglass Composite Tripod Extends to 72"

Tri-Max 90550
Heavy Duty Fiberglass Tripod Extends to 71"

Seco 5301-25-BLK
Heavy Duty Aluminum Tripod Extends to 63"

667-301 Leica GST120-9
Heavy Duty Wood Tripod Extends to 70.8"

Marking Products



Paint-Riter® Valve Action® is a fast-drying liquid paint marker that provides long-lasting, wear- and weather-resistant marks that are safe for almost any surface. As the most versatile liquid paint marker in the world, the xylene-free paint reduces user health risks and is available in 18 bold and fluorescent colors for accurate mark identification. Can be used on steel and iron, plastic, glass, pipes and tubes, rubber and tires, cloth and fabric.



096820	White	096825	Blue	096822	Red	097052	Flo. Orange
096821	Yellow	097051	Flo. Green	096823	Black	097053	Flo. Pink

The Paintstik Original B Solid Paint Marker combines the durability of paint in the convenience of a crayon. The real paint formula has superior marking performance on oily, icy, wet, dry or cold surfaces and is weather- and UV-resistant. This Paintstik works on rough, rusty, smooth, or dirty surfaces. Perfect on steel, iron, pipes and tubes, rubber and tires, lumber and timber, plastic, glass, concrete and stone.



080220	White	080222	Red	080230	Gray	082836	Flo. Green
080224	Orange	080223	Black	082831	Flo. Yellow	082842	Flo. Pink
080221	Yellow	080225	Blue	082834	Flo. Orange		



Markal Timberstik All Purpose Crayons are a soft, standard-grade lumber crayon for general-use marking and works well in cold climates. The wax-based mark is weather- and UV-resistant. Works on wood, concrete, stone, metal, plastic and rubber.

080350	White	080352	Red	080354	Orange
080351	Yellow	080353	Black	080355	Blue



The **#085490** wooden holder eases grade and lumber marking while preventing crayon breakage, designed for hex-shaped Markal markers.



The **#085489** wooden holder for round crayons enhances comfort during marking while reducing breakage, making it a reliable tool for precision.



#096867 Replacement tips will extend the life of the marker by maximizing the paint or ink used when marking on very rough, rusty, or dirty surfaces. 12/pk



#KCS Premium Scriber with Magnet
Aluminum handle with pocket clip and magnet. Replaceable readed tip



#KGS—Giant Scriber
Aluminum handle with pocket clip. Replaceable threaded tip. Extra large size is 6.25" long



#KPS - Premium Scriber
Aluminum handle with pocket clip. Replaceable threaded tip



Stringliner PRO Mason's Line Reels are made of durable polyethylene, with a patented handle that allows you to quickly change rolls. You can rewind using the hand crank, or auto-rewind using a power screwdriver inserted into the slot in the bottom of the handle. Available in 250' or 1000' lengths.

250' Length

- 25106 Orange
- 25115 Flo. Green
- 25165 Flo. Yellow
- 25162 Flo. pink

1000' Length

- 25768 Green
- 25762 Pink
- 25759 Orange
- 25765 Yellow



US TAPE
WORLD CLASS TOOLS SINCE 1876

Chalk-Rite® Jam Free #CR301JF Smooth winding 5-gear drive chalk line with ABS case, jam free line spool, and braided Extra Bold snap line.

- Jam-free braided line creates Extra Bold 0.04 in (1.0 mm) lines
- Durable ABS case with large refill port
- Smooth-running five-gear winding mechanism



Leica Robotic Total Stations



Automated Total Stations for the widest variety of measurement tasks and applications



Leica Nova MS60 MultiStation The scanning robotic total station

The MS60 is a scanning total station that empowers complete data collection of individual points and large areas by leveraging sensor fusion and automation. Seamlessly integrated into Leica field and office surveying software, you can quickly complete your work on-site and offer a range of high-value deliverables.

- **Surfaces and volumes** in construction and mining, soil heaps and stockpiles, DTM creation and checking surfaces, material thickness, blast faces and ground levels
- **Analysis of complex structures and objects within plant, marine and utility projects:** dimensional control, as-built and record keeping

- Highest-end total station
- 3D laser scanning
- GNSS connectivity
- Digital imaging



Leica MS60

Leica TS16 Robotic Total Station

Self-learning, survey-grade total station for all conditions.

Made to face any challenge, task or project, the Leica TS16 automated total station will reliably support you and deliver accurate data when and where you need it. With the engaging Leica Captivate field software, paired with the self-learning ATRplus for automatic target recognition under any environmental circumstance, the TS16 can tackle every task with ease.

- **Best-in-class automated total station for the widest variety of measurement tasks and applications:** including one-person or two-person instrument operation for surveying and stakeout.
- **Topographic surveying to create digital reality for mapping:** control point measurements, adjustments, computations, and data collection with powerful coding and line work routines.



Leica TS16

Leica TS13 Mid-Range Robotic Total Station

Combining efficiency, reliability and scalability for all surveying applications.

The Leica TS13 is a mid-range robotic total station. It is a scalable robotic total station, powered by Leica Captivate field software and can be connected to a Leica CS20 field controller. It can be upgraded at any time to benefit from additional functionalities.

- **Efficient data collection for mapping projects:** measurements, adjustments, and computations – all supported by powerful coding and linework routines.
- **Easy-to-use and data-centric field software:** efficient data collection, management, visualisation, import and export.
- **Upgradeable total station for measurement and layout tasks:** starting with two-person, scalable to one-person operation.



Leica TS13

Leica Flexline TS03/TS07/TS10 Manual Total Stations

Best in class and easy to use.

The FlexLine TS10 is equipped with Leica Captivate field software, enabling you to tie into the modern 3D dataflow – including enhanced linework and coding. The new Leica FlexLine manual total stations work reliably and deliver accurate results even in harsh environments.





Leica GNSS and Field Controllers

Leica AP20 AutoPole is the only smart system on the market that solves three common workflow problems surveying and construction professionals face daily: Entering the pole height manually into the field software, having to level the pole and accidentally locking to a foreign target at a busy site.

- Increase productivity and efficiency with **Tilt Compensation**, which removes the need to level the pole.
- **PoleHeight** functionality will update the height for you automatically as the pole height changes to ensure reliable and accurate measurements.
- **TargetID** feature! Automatic target search, identification and lock on your target prevents locking to foreign targets and avoids work interruptions that can occur on a busy site.

- Accuracy in height: +/- 1.0mm
- Tilt range: +/- 180°
- Range to Total Station: Typically 300m
- Number of different IDs: 16
- IP67 Dust and Water Resistance



Leica GS18

Leica GS18/I/T GNSS RTK Rover with Visual Positioning
Now, you can quickly capture the site in images and measure points from them, either in the field or later in the office. Measure points with obstructed view to the sky.

- Self-learning GNSS
- 99.99% Reliability
- Storage - SD Card
- IP68 Dust/Water Resistance
- 6 hour battery life



Leica CS20

Leica CS20 Field Controller
With the CS20, you are in complete control and can take your entire office on the go. It provides you with an intuitive user experience and makes your measuring tasks enjoyable.

- Win EC7 / 2GB Ram
- 4GB Internal storage
- 5" Touch Screen
- IP68 Dust/Water Resistance
- 8 hour battery life.



Leica CS30

Leica CS30 All-A-Round Field Controller. The Leica CS30 is small enough to take anywhere but has the power to perform a variety of survey jobs, use imaging sensors and work with drawings.

- Win 10 Enterprise LTSC 64bit
- 4GB Memory (RAM)
- 64GB eMMC Storage
- 7" Sunlight-Readable Screen
- IP6x Dust/Water Resistance



Total Stations and Theodolites



Leica iCON iCT30 Construction Digital Layout Tool

High-performance construction layout tool for building construction layout applications

With the continued trend towards digitalization and Building Information Modeling (BIM) in the Building Construction Industry, layout methods and processes are crucial. The Leica iCON Layout Tool is Made for Construction. It's equipped with the well-established and construction tailored field software Leica iCON build, the iCT30 meets most requirements for layout applications and as-built checks. Highly accurate and extremely durable.

- Move away from conventional analogue layout methods and easily adopt modern digital layout
- Increase productivity due to one-person operation of the iCON iCT30
- Layout lines for various foundation, structure and building exterior applications
- Layout interior drywall and insulation installations
- MEP layout of hanger locations for HVAC and duct work, inserts and slits for sheet metal work
- Fully automatic layout routines of points on floor or ceiling and lines for pipe wall penetrations
- Effectively do as-built checks and control measurements in vertical construction



Leica
Geosystems

No. 879463

Leica iCON iCR70 / iCR80 - Robotic Construction Total Stations

Super-modern technology for good old-fashioned accuracy.

Prepare and execute construction tasks faster, simpler and more accurately. This robot, tailored to your construction needs, is designed for one-person operation, giving you approximately an eighty per cent increase of productivity over other conventional layout practices. The iCR70 and iCR80 can be used by the existing construction workforce with minimal training and do not disrupt existing construction processes.

- Layout lines for footings or chalk line for formwork on foundation
- Layout points on blinding layer such as pipe insert or cut-outs before pouring concrete
- MEP layout of hanger locations for HVAC and duct work, inserts and slits for sheet metal work
- Fully automatic layout routines of points on floor or ceiling and lines for pipe wall penetrations

Leica Field and Office Software - Leica iCON site software offers you smart and customized positioning solutions for road construction and civil engineering applications.

- **Leica iCon Site** - Construction Software: Custom-built solutions for road construction
- **Leica iCon Build** - Construction Software: Intuitive software package for building constructive applications
- **Leica iCon Prep** - Office Software: The ultimate construction data preparation software

Leica
Geosystems



iCR70 No. 866351
iCR80 No. 866360

David White Digital Transit Theodolite with Laser Plummet

30X Power Magnification | 5" Accuracy | Dual Digital Display | Water Resistant

The David White DT8 Digital Transit Theodolite gives you accurate measurement for a wide range of construction and survey applications.

- Incremental encoding detection system with dual digital displays and automatic power shut-off
- Laser plummet for centering of point
- Coaxial tangent and clamp screws provide ease of use in sighting and alignment
- Built-in battery pack can be attached and detached by a single action
- Water resistant, sealed construction

Includes: instrument, sunshade, tool kit, rain cover, plumb bob, carrying case, rechargeable battery pack/charger, alkaline battery tray, user manual

SitePro



No. 46-D8896

Detection Equipment



A clearer view of underground utilities

MADE IN THE USA

Magnetic Locators

"Magnetic Locators are the quick and easy way to find ferrous and now non-ferrous materials both above and underground."



SCHONSTEDT INSTRUMENT COMPANY

SUBSURFACE INSTRUMENTS, INC.

contractors' **top 50** PRODUCTS

Schonstedt GA-52CX

Schonstedt Maggie

Subsurface ML-3SY

Subsurface AML Pro

Detects the magnetic field of iron and steel objects. Great for locating Mag & PK Nails, Manhole Covers, Steel Pipes and Septic Tanks, Corner Markers, Well Casings and more...

Find buried PVC/PE Pipes using GPS and advanced digital technology

Power:	2X 9V Batteries / 40 hrs	1X 9V Battery / 24 hours	3X 9V Batteries / 40 hrs.	3X 9V Batteries / 25 hrs.
Length/Weight:	42" length	32.5"	40"	14" / 2.5lbs
Warranty:	7 Year Warranty		3 Year Warranty	

Leica C-Thru

Utility Detection | Precision Utility Tracing | Cable Locating

All-in-one GPR for accurate scanning and real time analysis of concrete structures. See through concrete structures and reveal true data.

Finds:

Rebar, Voids, Post-Tension Cables, Cavities, Conduits More... Call for your customized quote.



Leica DD100 / DD220 & DD230 Series

Locate Underground Cables and Pipes

The Leica DD100/DD200 locators feature easy to use controls for the detection of buried cables and pipes before excavation work.

Finds:

Cast Iron Water, Cast Iron, Gas, Telecom Lines, Power Lines, More...Call for your customized quote.



Leica GPR - DS2000 & DSX Series

Ground Penetrating Radar & Utility Detection Solutions

There's a lot going on underground that you need to know about before you ever start to dig.

Leica Utility Detection Equipment finds all potential threats, including non-conductive pipes and fibre optics, increasing safety by lowering the risk of accidentally hitting underground assets.

Unmanned Surface Vessels (USV / ROV)

Bathymetric surveying

Seafloor has been building Unmanned Surface Vessels (USVs) for over a decade.

They lead the market with dynamic platforms that extend the capabilities of traditional survey equipment, enabling surveyors to remotely analyze otherwise challenging environments. Seafloor's turn-key USV platforms integrate professional-grade technology to efficiently conduct missions on water.



Field Supplies & Accessories



8080-00-ORG
Triple Prism Bag



8130-00-ORG
Tall Triple Prism Bag



8100-20-ORG
36" Rhinotek Lath Bag



8101-20-ORG
48" Rhinotek Lath Bag



8153-10-ORG
Extra Large Tripod Bag



8180-20-ORG
Heavy Duty Prism Pole Tripod Bag



8121-00-ORG
Top Loading Total Station Field Case



09-2122-GT
2 Meter Aluminum Snap-Loc Rover 10ths



09-2222-GT
2.2 Meter Carbon fiber Snap-Loc Rover 10ths



5128-00
2 Meter two-piece Rover Rod Carbon Fiber



07-4047
Mini Stake Out Rod 4.7" 5/8x11 threaded stud



8102-00-ORG
33" Large Lath Bag Carry up to 50 lath



641615
GMP111 Mini Prism with holder. Has a 4 section pole and prism with a constant of +17.5 mm

seco



07-4001
Mini Stake Out Rod 1.28" 5/8x11 threaded tip 1-1/4" OD

07-4160

Mini Prism Pole Bipod 10" Aluminum Legs Holds poles 1" to 1.25"

SitePro



Seco 5217-04-RED
Thumb-Release Bipod No-crush bipod head for poles from 1 to 1.25 inches Extends to 6 feet



385500
GLS11 2.15 Reflector Pole 10ths and Metric



754391 GLS12 2m (cm)
754389 GLS12F 2m (ft)
Telescopic Pole "Snap Locks" at 2M



667310
GLS112 3.65m Reflector Pole CM and Feet



752292
GLS30 Carbon Fiber Pole 1.8m and 2m "Snap Lock" 5/8" Screw



796-130
CRP3 Telescoping Carbon Fiber/Alum. Pole 10ths/100ths



Field Supplies - Targets, Prisms and Carriers



503010

KR Reflective Adh. Targets 30x30mm Yellow 18/pk



503011

KR Reflective Adh. Targets 30x30mm Orange 18/pk



503015

KR Reflective Adh. Targets 40x40mm Yellow 12/pk



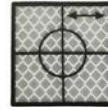
503016

KR Reflective Adh. Targets 40x40mm Orange 12/pk



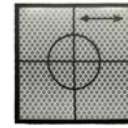
503060

KR Reflective Adh. Targets 24x24mm Silver 35/pk



503065

KR Reflective Adh. Targets 44x44mm Silver 12/pk



503070

KR Reflective Adh. Targets 64x64mm Silver 10/pk



503080

KR Reflective Adh. Targets 104x104mm Silver 1/pk



644327

Leica GRZ101

360° Reflector with male 1/4" thread on the top and female 1/4" thread on bottom. Can be mounted to the optional GLS115 prism pole.



754384

Leica GRZ122

360° Reflector with 5/8" Threaded adapter allows connectivity to the Leica SmartAntenna



639985

Leica GRZ4

Leica 360° prism with 5/8-inch thread adapter. For all robotic work with a survey pole. 2,000 foot working range and a prism constant of 23.1mm



763532

Leica Adhesive Reflective Targets 20mm x 20mm 20/pk



763533

Leica Adhesive Reflective Targets 40mm x 40mm 20/pk



763534

Leica Adhesive Reflective Targets 60mm x 60mm 20/pk



03-1517

SitePro

Swiss-style mini prism system is a compact set with high precision centering.. +17.5mm constant prism with built-in target plate



641618

Leica GPR111

Basic Circular Tilting Prism with holder and target. Absolute prism constant is -34.4mm. Leica prism offset is 0.0mm. Uses



641617

Leica GPR121

Leica Pro Circular Prism with Holder. Made with high quality for strict working conditions.



03-RT20MM

Sitepro Reflective Retro Adhesive Targets 20mm x 20mm 10/pk



03-RT30MM

Sitepro Reflective Retro Adhesive Targets 30mm x 30mm 10/pk



03-RT40MM

Sitepro Reflective Retro Adhesive Targets 40mm x 40mm 10/pk



03-RT60MM

Sitepro Reflective Retro Adhesive Targets 60mm x 60mm 10/pk



6602-02

Seco 25 mm L-Bar Mini Copper-Coated Prism. Ideal for deformation and mining surveys or where permanent mounting is needed.



6605-05

Seco 25 mm L-Bar Mini Silver-Coated Prism. Ideal for deformation and mining surveys or where permanent mounting is needed.



8126-20 Sokkia Plastic Plumb Line Target

2" x 4" Red & White Notched for Plumb Line



5080 Duramark Paper Survey Targets

5" x 8" Red & White Adhesive Back 25/pk



2540 Duramark Paper Survey Targets

2-1/2" x 4" Red & White Adhesive back, 25/pk



7010 Duramark Paper Survey Targets

7" x 10" Black & White Adhesive Back 25/pk

Tribrachs, Equipment and Accessories



777508
Leica GDF321
Leica Professional 5000 series green tribrach without optical plummet.



777509
Leica GDF322
Leica Professional 5000 series green tribrach with optical plummet



777970
Leica GDF323
Leica PRO tribrach black without optical plummet



05-1200-B
SitePro Tribrach with 8-minute circular vial and optical plummet



05-1201-B
SitePro Eurostyle Tribrach with 8-min circular vial, black w/out optical plummet



05-1300-B
SitePro Eurostyle Tribrach with 8-min circular vial and laser plummet



8071-00-ORG
Seco Tribrach Case

Protect and transport your tribrach as you move from job to job. Easily holds a tribrach. Measures: 6 x 6 x 2 in
Bright Orange
Weights .40 lbs.

ZIPLEVEL PRO-2000 High Precision Altimeter



Replaces Rotary Lasers as the World's Fastest, Easiest, most Powerful, Precise and Only Pressurized Bubble Free level.

- High Precision Function
- Compact Design allows instant set-up and easy storage.
- One-person operation
- Measure over any distance or elevation without math.



2010-00
Seco Fixed Tribrach Adapter. Use this adapter for mounting retro prisms and tripod mounted target systems.



2020-00
Seco Rotating Tribrach Adapter. This rotating friction top adapter allows the prism to be pointed after installation in the tribrach.



2070-00
Seco Rotating Swiss-Style Tribrach Adapter. This adapts retro prisms to Swiss-style tribrachs. Fits all tribrachs.



667216
Leica GRT146
Carrier with 5/8" Thread
Perfect for tribrachs with optical plummet



667313
Leica GRT144
Tribrach adapter carrier for snap-in prisms and antennas



2001-00
Tribrach Adjusting Cylinder
Use for checking and adjusting optical plummet tribrachs in the office.



2002-00
Tribrach Adjuster
Use for adjusting optical plummet tribrachs & tribrach bubbles with 2-minute bubble.

Ultimate Leica Backsight



Leica 641617

Leica GPR121 Pro precision circular prism with anti-reflex coating, a mounted in metal holder and range of up to 11,500 ft. GPR121 target plate is removable.

Leica 667313

Leica GRT144 Tribrach adapter carrier for snap-in prisms and antennas with optical plummet. Reflector centering accuracy: 1.0mm

Leica 777509

Leica GDF322 Professional tribrach with optical plummet. High quality, robust tribrach with an 850 gram weight and Torsional stiffness < 1"



Accessories



Genuine Leica Geosystems accessories, such as pole adapters, topo boots and replacement points, help ensure accurate and efficient surveying, keeping your jobs running smoothly.



**819952
GLS30
Pole Tip**
Replacement prism pole point for Leica GLS30 & GLS31 poles.



**667217
GAD31 Screw to Stub**
For mounting of GNSS antennas to poles and carriers with stub



**743503
GAD105 Mini Prism Adapter**
For attaching the GMP111, GMP111-0 to poles and carriers



**742006
GAD103 Mini Prism Adapter**
Mini prism adapter for attaching the GRZ101 to poles with stub.



**806685
GAD103 Mini Prism Adapter**
Mini prism adapter for attaching the GRZ101 to poles with stub.



**806687
GAD103 Mini Prism Adapter**
Mini prism adapter for attaching the GRZ101 to poles with stub.



**817345
GAD103 Mini Prism Adapter**
Mini prism adapter for attaching the GRZ101 to poles with stub.



**667236
GAD103 Mini Prism Adapter**
Mini prism adapter for attaching the GRZ101 to poles with stub.

Seco cutting edge accessories for surveying, construction, utilities and other industries that use GPS/GNSS technology.



5194-003
Sharp point for tripod or prism pole



5194-007
Dull point for tripod or prism pole



5194-01
Aluminum point with replaceable plumb bob point



5194-03
Lightweight dull point with replaceable tip



5194-05
Lightweight sharp point with replaceable tip



5194-00
Point with removable tip.



5180-00
Double male adapter



2090-00
Adapter for Leica prism



2090-04
Height adapter for Seco, Sokkia, Omni 115mm prisms



2131-01
5/8 x 11 female to 1/4 x 20 female adapter



91605
Aluminum point and steel tip



6200-10-003
Replacement point for mini prisms



2080-00
Leica prism adapter



2080-SS
Stainless steel Leica prism pole adapter



2090-10
Quick change adapter for Leica GPH1



6601-01
Swiss-style quick release adapter with 1/4-20 threads



2090-02
Height adapter for Leica 86mm prisms



5187-00
GPS Quick release adapter



5181-00
Double female adapter



5192-02
Toopo Show & Point Combo



91601
Topo boot



5194-10
Center punch point



5210-012
Seco Bipod/Tripod foot plate



5195-01
Pole peg adjusting jig

High Definition Scanning (HDS)



Leica ScanStation P50

The fastest and safest, long-range 3D laser scanner.

High Performance | Scan inaccessible places | Complete Scanning Solution

For industry professionals looking to scan inaccessible places and find new business opportunities, Leica ScanStation P50 is the fastest and safest, long range 3D laser scanner. Unlike any other laser scanner, the P50 solution maximises productivity by scanning inaccessible places at a safe position on site, reducing time in the field with less setups.

- Highest quality 3D data and HDR imaging
- Ranges of up to 1 kilometre (.62mi)
- Low range noise
- Survey-grade dual-axis compensation

- when it has to be right **Leica**
Geosystems



Leica ScanStation P40/30

The right choice | Reduce downtime | Industry leading software Versatile high-speed laser scanner.

Leica ScanStation P30/P40 deliver highest quality 3D data and High-Dynamic Range (HDR) imaging at an extremely fast scan rate of 1 million points per second at ranges of up to 270m. Unsurpassed range and angular accuracy paired with low range noise and survey-grade dual-axis compensation form the foundation for highly detailed 3D colour point clouds mapped in realistic clarity.



- Highest quality 3D data and HDR imaging
- Ranges of up to 270 m (.62mi)
- Low range noise
- Survey-grade dual-axis compensation

Leica RTC360 / RTC360 LT

High-Speed 3D laser scanner with integrated HDR spherical imaging system. And Visual Inertial System.

Highly portable | Simple to use | Fast

Automatically pre-register point cloud data in the field to quickly conduct quality control checks, improve productivity and make better-informed decisions on site

SCANNING & IMAGING

- Field of view: 360° (horizontal) / 300° (vertical)
- Range: Min: 0.5 up to 130 m
- Speed: Up to 2,000,000 pts / sec
- Resolution: 3 user selectable (3/6/12 mm @ 10m)
- Camera: 36 MP 3-camera system captures 432 MPx raw data for calibrated 360° x 300° spherical image
- Speed: 1 minute for full spherical HDR image at any light condition
- HDR: Automatic, 5 brackets



Leica BLK Series Scanners



Leica BLK360 Imaging Laser Scanner

The next generation of the smallest and lightest laser scanner has arrived. The all-new Leica BLK360 is an advanced precision imaging laser scanner. At the push of a button, users can capture a full scan with spherical images in only twenty seconds—over five times faster than the BLK360 G1.



- Four scan settings capture data in 7, 13, 30, or 75 seconds at 680,000 points per second
- Rich high dynamic range (HDR) imagery with 5 bracket HDR
- Small and light, measuring 155x80mm and weighing just 850 g with batteries installed
- 5 times faster than the BLK360 G1, taking 20 seconds for a full-dome scan with photospheres
- Visual Inertial System (VIS) automatically pre-registers scans in the field
- High speed data transfer via USB-C and WiFi

Leica BLK2GO PULSE

Instant reality capture from your perspective with a streamlined end-to-end workflow. The Leica BLK2GO PULSE is a handheld first-person laser scanner. Instantly capture what you need, when you need it, from your point of view.

- **First-person scanning:** See what you capture from a first-person scanning perspective. Colourised 3D data is streamed in real time to your smartphone screen.
- **Instant data availability:** Immediately view and share colourised 3D point clouds and images from the field, as easy as sharing a photo or video.
- **Smart scanning guidance:** In-app notifications provide real-time guidance to ensure optimal scanning practices.



Leica BLK2GO LiDAR & Imaging

Mobile Mapping. Simplified
Simple | Sleek | Award Winning

The BLK2GO is a handheld imaging laser scanner that creates a 3D digital twin while you walk through a space. It is the fastest and easiest way to scan a large building structure or environment.

- One-button operation
- Scan rate 420,000 pts/sec
- 360° Field of View
- 24 hours of scanning (compressed data)
6 hours uncompressed data



Leica BLK3D 3D Imager

In Picture 3D Measurement Solution.
Capture | Share | Measure

The Leica BLK3D is a real-time, in-picture 3D measurement solution. The Leica BLK3D makes in-picture measurements with professional-grade accuracy in real-time possible.

- Take a picture. Measure anything
- 64GB Storage holds >5000 images
- 80° Field of View
- Operating time: Up to 9500 laser measurements.

Leica Zeno FLX100 plus Data Collector



Leica Zeno FLX100 plus

- when it has to be right **Leica**
Geosystems



Compact, rugged and lightweight, the Leica Zeno FLX100 plus is your dependable data collection solution. Achieve up to 2cm accuracy with this easy to use, compact, and lightweight GPS rover.

Capture spatial data in a simple and flexible way using the setup that fits your workflow, whether it be on a survey pole for high accuracy data or with the universal handheld tray to build your own handheld GNSS. The FLX100 plus can be paired with your own iOS, Android or Windows smartphone or tablet providing freedom of choice to work the way you want.



FLX100 plus GIS Data Collector

Achieve 2cm accuracy with a palm-sized, easy-to-operate GIS data collector that is compatible with iOS, Android, or Windows devices.

The FLX100 plus comes with a free trial of Zeno Mobile, our field app that is compatible with ArcGIS Online or ArcGIS Online Enterprise.

Prefer a different collector app? No problem, just run Zeno Connect to send data to the compatible app of your choice.

Accessories:

- GLS30 Fiberglass Pole 752292
- Hand strap Tether 948729
- Tablet Bracket 8255867
- Pole Mount to attach to pole 915867
- Handheld Tray 915868
- Hard Carry Case 8255251
- CCP Warranties available



Specifications:

Horizontal real-time accuracy	RTK (Multi-frequency): 2cm + 1ppm*
Vertical real-time accuracy	RTK (Multi-frequency): 3cm + 1ppm*
Post-processing accuracy static mode	Horizontal 2cm + 1ppm* Vertical 3cm + 1ppm*
Satellite signal tracking	GPS (L1 C/A, L2C), Glonass (L1OF, L2OF), BeiDou (B1I, B2I), Galileo (E1B/C, E5b), QZSS (L1C/A, L2C), SBAS
Number of channels	184 channels
Battery	Internal 3.8V Approx 20 hours / 4 hours to full charge



Leica BLK2FLY | Autonomous UAV Flying Laser Scanner

Worlds first fully integrated autonomous LiDAR UAV



The Leica BLK2FLY is an autonomous flying laser scanner with advanced obstacle avoidance for easy reality capture from the sky. It captures building exteriors, structures, and environments to create 3D point clouds while flying. The BLK2FLY is designed to be easy-to-use: with a few simple taps on a tablet, users can set the BLK2FLY aloft to autonomously scan building exteriors and features, such as hard-to-access areas like rooftops and facades. Deploying the device itself is as easy as unfolding it, switching it on with the press of a button and placing it on the ground, ready for takeoff.

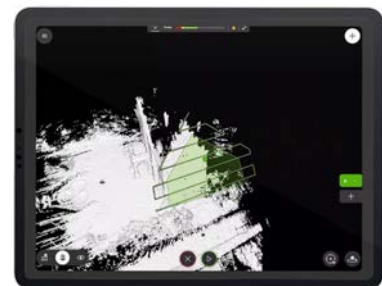


BLK2FLY captures building exteriors, structures, and environments to create 3D point clouds while flying.

- Allows you to scan hard-to-reach areas like building facades and rooftops
- Autonomously captures complete scans of building exteriors to create 3D digital twins
- GrandSLAM sensor fusion of LiDAR, radar, cameras, and GNSS for complete scan coverage, optimized flight paths, and shortest return to home
- Advanced obstacle avoidance for superior flight safety
- Hot swap battery system
- Lightweight, portable, easy to use

Key Specifications:

- 13 min Max Flight Time
- 360° Field of view
- Scan range: min 0.5m up to 25m
- Point measurement rate: 420,000 pts/sec,
- Vision System: 5-camera system
- Relative accuracy: <20mm (concrete/brick surface)
- Max. typical transmission distance
WLAN approx. 100 yards line of sight.
- Housing - Carbon and glass fiber frame.
- Internal storage - 256 GB
- Weight (incl. battery) - 5.73 lb



Pilot using the BLK2FLY Live App for iPad supporting LTE connectivity.

Inspired Flight Enterprise Drones



IF800 Tomcat - Portable, Deployable, Dependable

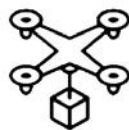


The **Inspired Flight IF800 Tomcat** is a reliable and versatile drone specifically designed for professionals, featuring advanced capabilities for high-resolution aerial photogrammetry, precise surveying, search and rescue operations, and infrastructure inspection.

This American-made tool meets high-quality standards while enhancing operational efficiency and productivity. Its key applications span defense, mapping, utility inspection, and public safety, making it an invaluable asset for those looking to innovate and elevate their organizational capabilities. Embrace the opportunities the F800 Tomcat offers to transform your field.



54 min
Max flight Time



6.6 lbs
Max Payload



49 mph
Max Speed



23 knots
Max Wind Resistance

Inspired Flight Payloads - Inspired Flight offers a range of integrated payloads tailored to meet the specific needs of each industry. By understanding the unique challenges of different sectors, we enhance operational efficiency and data collection. Our commitment to customization ensures that our solutions align with industry standards, elevating our clients' aerial operations in agriculture, construction, and surveillance.

OPTICAL



Sony ILX-LR1

The **Sony ILX-LR1** Industrial Camera captures stunning 4K imagery with a lightweight design for easy drone or equipment mounting.

The **Sentera 65R** is an ultra-high resolution sensor engineered for seamless integration with drone and RTK systems.



Sentera 65R

EO/IR



Gremys VIO F1

The **Vio F1** series offers advanced lightweight EO/IR payload technology for industrial applications.

It features a 4K zoom sensor, a 640x512 radiometric thermal camera, and an integrated 2400m laser rangefinder, providing exceptional performance in a compact design.

LiDAR



GeoCue TrueView 535

The **TrueView 535** upgrades the TrueView 515 with a third LiDAR beam for better vegetation detail and an extra nadir camera for clearer photogrammetry, improving data quality and accuracy.

Its extended LiDAR range provides greater versatility for surveying applications and other uses.



GeoCue - The Leaders in LiDAR mapping hardware and software.

GeoCue's dual-purpose mobile mapping and drone LiDAR systems skillfully blend the strengths of both technologies, providing unparalleled effectiveness in capturing complex environments. This versatile sensor empowers professionals to seamlessly tackle a wide range of projects, whether it's capturing vast aerial perspectives over expansive terrains or gathering detailed ground-level data in confined urban spaces. The adaptability of this system allows for efficient data collection across varied landscapes, enabling users to optimize their workflows. By investing in just one multi-functional sensor, you not only maximize efficiency but also gain the flexibility to adapt to diverse project requirements with remarkable ease, ultimately enhancing the quality and accuracy of your data outputs.

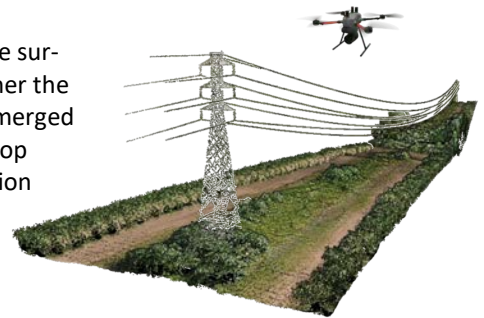


UAV LiDAR and photogrammetry data processing

With GeoCue's LP360 software, you can efficiently process, analyze, and optimize drone survey data, transforming it into valuable insights and deliverables. Whether the LiDAR data is collected airborne or terrestrially, 3D point clouds have emerged as a crucial component in mapping efforts. LP360, a sophisticated desktop LiDAR software solution, streamlines the process of extracting information and producing deliverables within an intuitive GIS environment.



- Intuitive workflow
- Multi-flight import and processing
- GIS interface allowing combination with other geospatial data
- Powerful point cloud visualization with multiple and synchronized windows



GeoCue TrueView Sensors

TrueView 535



The TrueView 535 enhances the popular TrueView 515 with an additional LiDAR beam return for better vegetation detail and three 26 MP cameras—two oblique and one nadir—for improved photogrammetry.

- LiDAR + Imagery
- Hesai XT32M2X
- 32/3 LiDAR Returns
- LiDAR Range - 120 m @ 20% reflectivity
- Precision: 5 mm / Accuracy: 20 mm
- Up to 640 kHz Pulse Repetition Rate

TrueView 540



The TrueView 540 Sets a New Standard for Accuracy and Quality in the 500 Series, Making High-end LiDAR More Accessible Than Ever

- LiDAR + Imagery
- CHCNAV single beam laser scanner - 1535nm wavelength
- Up to 8 LiDAR Returns
- LiDAR Range - 400 m for targets > 20% reflectivity
- Precision: 5 mm / Accuracy: 15 mm
- Up to 500 kHz Pulse Repetition Rate
- 45 MP Global Shutter Full frame Camera

High Definition Scanning / Enterprise Drones



DJI Matrice 30 Series
Optimized for public safety

Sensor: 1/2" CMOS Sensor
Max Flight Time: 41 Min
Max Speed: 51 MPH
Sensing System: Upward, downward, backward, sideward
Max Transmission Distance: 4.97 miles
Max Takeoff Weight: Approx. 8.8lbs

DJI Matrice 350 RTK Fully Powered to Forge Ahead

Max Flight Time: 55 Min
Max Speed: 50 MPH
Sensing System: Forward, backward, upward, downward, left, right
Max Payload: 2.7kg / 5.59lb.
Camera: 1080p resolution
IP Rating: IP55
Battery: New Dual-Battery, hot swappable battery system



DJI Mavic 3 Enterprise
Your Everyday Commercial Drone

Sensor: 4/3 CMOS Mechanical Shutter (3E)
1/2-inch CMOS, Effective pixels:49 MP (3T)
Max Flight Time: 45 min
Sensing System: Forward, backward, upward, downward
Max Transmission Distance: 10 km
Weight: Approx. 1050 g / 2.31 lbs.

WingtraOne GEN II

A mapping drone for fast and accurate surveying data every time.

Efficient fixed-wing flight

Fly at 16 m/s (36 mph) for up to 59 minutes per flight for large coverage.

61 MP camera

WingtraOne can fly higher than drones limited to 20 MP cameras, so you capture more ground and more detail with every picture and a larger area per flight.

No more GCPs, checkpoints only.

With an onboard high-precision PPK GNSS receiver you no longer need to lay out ground control points (GCPs). Use as few as three checkpoints to verify your map quality.



Ready to fly in five minutes.
Fully Autonomous.

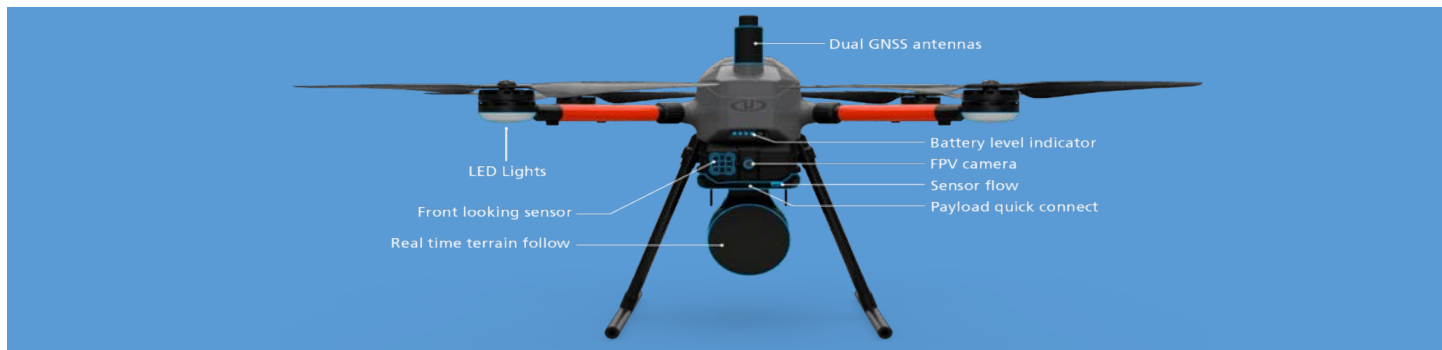


Full-frame camera: 61MP
Max Flight Time: 59 Min
Max telemetry range: 10km/6mi
Lowest GSD: 0.28 in/px
Absolute HZ accuracy down to: 0.4 in
Coverage at lowest GSD: 270 ac
IP Rating: IP68 Rated for water and dust resistance.



THE MOST COMPACT SURVEY-GRADE DRONE LiDAR SURVEYING EQUIPMENT ON THE MARKET: EasyOneLiDARUHR+

This is Microdrones' best LiDAR drone surveying equipment ever. Built upon their 4th-gen drone technology, all EasyOne systems are more compact, more optimized, lighter, safer and more efficient. This system delivers integration unmatched in the drone surveying industry, making it easier than ever for you to plan, fly, collect, process and visualize your geospatial data projects.



THE IMPROVED CONTROLLER IS COMPLETELY INTEGRATED WITH MDCOCKPIT. NOT MORE CONNECTING A TABLET TO YOUR REMOTE



A NEW BATTERY MANAGEMENT SYSTEM FOR SMART SURVEY AND GEOSPATIAL PROFESSIONALS



THIS EASYONE LIDARUHR+ PACKAGE INCLUDES:

- EasyOne Drone Platform
- Charger & Flight Battery
- Rugged Carrying Case
- Mag-les Navigation
- Excellent Customer Support
- Encrypted Digital Data Link
- MDRC
- Remote ID Enabled
- Fully Integrated High Resolution LiDAR & Camera
- mdCockpit Software
- Tap & Fly
- LP360 Data Processing Software

Autel EVO II V3 Rugged Bundles



EVO II Series V3

The new Autel EVO II series v3 drones have arrived. There are six new models with a full suite of accessories to keep your flying time productive. So you can Work Like Never Before.



EVO II Pro 6K Rugged Bundle V3

102001513

The leader in Picture Quality and Flight intelligence. Featuring a 1" sensor, 6K Ultra HD, a 20MP camera, and 360° obstacle avoidance.

- 1x Aircraft: battery, propeller, gimbal cover, 32GB SD card
- 1x Remote Controller & lanyard
- 1x Spare Control Sticks (pair)
- 1x Spare Battery
- 1x spare Propeller (pair)
- 1x Battery Charger & Power Cable
- 1x RC Charger and Cable
- 1x Carrying Case



EVO II Pro 6K RTK Rugged Bundle V3

102001519

Capture Every Detail. An entirely new RTK module provides real-time centimeter level positioning data and supports PPK.

- 1x Aircraft: battery, propeller, gimbal cover, 32GB SD card
- 1x Remote Controller & lanyard
- 1x Spare Control Sticks (pair)
- 2x Spare Battery
- 2x spare Propeller (pair)
- 1x Battery Charger & Power Cable
- 1x Multi-Charger
- 1x RC Charger, Cable and Case
- 1x Extended Port Cover
- 1x Carrying Case



40 min max flight Time | 9.3 mi HD Transmission | 16x Digital Zoom | Modular Accessories



EVO II Dual 640T Rugged Bundle V3

102001512

Equipped with a 640*512 high-resolution thermal imaging camera featuring a 13mm focal length lens and 16x digital zoom, It is easy to observe distance target.

- Aircraft (including battery, propellers, and gimbal cover)
- V3 7.9" Smart Controller (with controller case)
- Spare Propellers (pair)
- Smart Controller USB-C Charging Cable & Power Brick
- Battery Charger (Wall Cord and Power Converter)
- Spare Battery
- Spare Controller Sticks
- 32 GB SD Card
- Smart Controller Hanging Neck Strap
- Evo II Battery Car Charger
- Evo II Battery Multicharger



EVO II Dual 640T RTK Rugged Bundle V3

102001517

Dual Camera, Accurate Temperature Measurement. Equipped with a high-resolution thermal imaging camera and an all new Sony .8" 50 megapixel RYYB sensor.

- 1x Aircraft: battery, propeller, gimbal cover, 32GB SD card
- 1x Remote Controller & lanyard
- 1x Spare Control Sticks (pair)
- 2x Spare Battery
- 2x spare Propeller (pair)
- 1x Battery Charger & Power Cable
- 1x Multi-Charger
- 1x RC Charger, Cable and Case
- 1x Extended Port Cover
- 1x Carrying Case



Autel EVO II V3 Enterprise Bundles



EVO II Enterprise Series V3



EVO II Enterprise V3 integrates a superior imaging system, an upgraded 15km image transmission (SkyLink 2.0) and additional accessories in order to meet different aerial needs including inspection, search and rescue, law enforcement, fire fighting, and more. The foldable design empowers industry users with an efficient and portable aerial work tool.



EVO II Pro 6K Enterprise Rugged Bundle V3

102001515



EVO II Dual 640T Enterprise Bundle V3

102001516



Benefits of the V3 Series Smart Controller/SE;

- 2000 Nit Super-Bright screen Controller
- 2K Ultra HD screen on Smart Controller
- 128 GB of data storage on Smart Controller
- Nearly 5 hours of battery life
- Fan-cooled for operation in high-heat environments

Benefits of the V3 Series Aircraft: Thermal Models:

- Outline transparency control
- Radiometric
- Detail/Outline Enhancement

Benefits of the V3 Series Aircraft

- 40 minutes of flight time
- 15 km/9.3 miles of range (clear LOS)
- 128GB internal storage
- Access to all constellations (V3 seeks satellites much faster in multi-path environments)
- Tri-Band signal (2.4, 5.8, 900MHz)
- Optimized for low light and clean zoom
- Radiometric Thermal (640T models)
- ISO 44,000 (Night mode)
- 360° Obstacle Avoidance
- Encrypted data transmission

Mission Versatility

With an expanded selection of accessories at its disposal, the EVO II Enterprise V3 can evolve from a simple imaging tool to a multifunctional flight platform that can adapt to different scenarios.



Loudspeaker

Enables effective on-site communication through long-distance live broadcasts and prerecorded audio loops.



Spotlight

Beams a powerful, long-distance aerial light when searching or shooting at night.



Strobe

Indicate the location of the aircraft at night to avoid air traffic accidents. Compliant with FAA regulations for night flying, visible over 3 Miles away.



RTK Module

(Optional)

Provides centimeter-accurate positioning data for mapping and reduces electromagnetic interference for flying near critical structures.



Controllers

Autel Robotics 6.4" Smart Controller SE, V3

102001508

Includes:

- 1x 6.4" Smart Controller
- 1x USB - C Controller Charging Cord
- 1x Charging Brick
- 2x Controller Sticks (2 pairs)
- 1x Smart Controller Hanging Neck Strap
- 1x Controller Antenna (1 pair)

Autel Robotics 7.9" Smart Controller, V3

102001507

Includes:

- 1x 7.9" Smart Controller (With Controller case)
- 1x USB - C Controller Charging Cord
- 1x USB - A & C Charging Brick
- 2x Controller Sticks (2 pairs)
- 1x Smart Controller Hanging Neck Strap

Interchangeable Cameras

Autel Robotics EVO II V3 6K Gimbal Camera

103000059

Autel Robotics EVO II V3 640T Gimbal Camera

103000052

Broadcasting

Autel Robotics Live Deck 2

102001438

Includes:

- 1x Autel Robotics Live Deck 2
- 1x SMA Threaded Antenna (1 pair)

Stream Anywhere. EVO II Pro V3 supports multi-port HDMI real-time output to meet the requirements of projection monitoring and live streaming with Live Deck 2.

Parts

Autel Robotics EVO II Battery

102000199

Autel Robotics EVO II Propellers, Low-Noise

102000198

Autel Robotics EVO II Enterprise Propellers - (Enterprise Models Only)

102001181

Autel Robotics EVO II 110V Charger for Battery/ Controller

102000200

Autel Robotics EVO II Battery Charging Hub

102000204

Autel Robotics EVO II Car Charger

102000189

Autel Robotics EVO II Propeller Guards

102000202

Autel Robotics SD Cardholder

500003452

Autel Robotics Landing Pad

102001248

EVO II 6K Gimbal Guard

102000231

EVO II Dual 640 Gimbal Guard

102000232

RTK Module

102000619



Explore our Rental Equipment



- **Construction Equipment:** Grade Lasers, Automatic Levels, Digital Levels, Pipe Lasers
- **Land Surveyors Equipment:** High-Definition Scanning (HDS), Total Stations, GPS, Data Collectors, Ground Penetrating Radar (GPR)
- **Tools & Accessories:** Tripods, Prisms, Prism Poles, Tribachs and more.

[See More: Kukerranken.com/Rentals](https://www.kukerranken.com/Rentals)

Get your project done without the long-term commitment!

Explore our Service Department

→ Equipment Repairs

Kuker-Ranken provides expert repair services for surveying and construction equipment, ensuring optimal performance, quick turnaround, and reliable service.

→ Equipment Service

Kuker-Ranken delivers top maintenance for surveying and construction equipment, boosting performance and reducing downtime for smoother operations.

→ Equipment Updates

Kuker-Ranken updates your equipment's software and firmware for enhanced performance, new features, and security fixes.

[See More: Kukerranken.com/Service](https://www.kukerranken.com/Service)



Kuker-Ranken provides construction and surveying equipment rentals, high-quality tool sales, and repair services, offering expert advice and tailored solutions for the land surveying and construction sectors.

Authorized Leica Service Center



[www.KukerRanken.com](https://www.kukerranken.com)



A TRADITION IN PRECISION



Seattle

21601- 66th Ave. W. Unit A
Mountlake Terrace, WA 98043
Local 425-771-7776 | Toll Free 800-454-1310

Tacoma

4905 Pacific Hwy East, Suite 1
Fife, WA 98424
Local 253-922-6087 | Toll Free 888-562-3082

Portland

308 SE Taylor Street
Portland, OR 97214
Local 503-641-3388 | Toll Free 800-472-7007

Las Vegas

5850 S. Polaris Ave., Suite 700
Las, NV 89118
Local 702-586-1152 | Toll Free 844-420-1687

Salt Lake City

2712 S. 3600 W., Suite D
Salt Lake City, UT 84119
Local 801-878-9763 | Toll Free 844-702-7329

Boise

4686 W. Chinden Blvd.
Garden City, ID 83714
Local 208-369-4388 | Toll Free 800-537-6848

St. George

498 W. Telegraph Street #420
Washington, UT 84780
Local 801-878-9763 | Toll Free 844-702-7329

Rogers, AR

NWA VDC Specialist
Rogers, AR
Local 479-629-0458

Sales - Service - Rental - Training
Technical Support - 425-953-2825
www.KukerRanken.com