

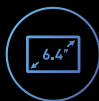


Autel Smart Controller SE



Autel Smart Controller SE

Smart Controller SE comes with an 6.4-inch OLED touch screen and latest gen 8-core processor for HD image transmission. SkyLink 2.0 Transmission technology guarantees long-distance operations from up to 15km away and enhances anti-interference abilities with triple band frequency hopping. The customized Android system allows for additional flexibility with 3rd party apps and an IP43 rating ensures all weather performance.



6.4-Inch HD
Touch Screen



4-Hour
Long Battery Life



-10°C to 40°C
Operating Temperature



8-Core
Processor



Customized
Android System

High Resolution OLED Screen

The Autel Smart Controller SE comes with an 6.4" OLED 2340x1080 touch screen with exceptional touch sensitivity. The OLED's high contrast and 800 nit brightness makes the Smart Controller SE readable in most daylight conditions.

6.4"

OLED Screen

800nits

Max. Brightness

2340x1080

Resolution





SkyLink 2.0 Transmission Technology

Autel Smart Controller SE uses Autel's latest SkyLink 2.0 transmission technology, capable of QHD video within 1km and HD video up to 15km away. SkyLink 2.0 utilizes triple frequencies of 5.8Ghz, 2.4Ghz, and 900 Mhz for enhanced anti interference capabilities in urban environments.

15km
Transmission Range



* 900MHz working frequency is only applicable for FCC countries.

3rd Party App Support

Smart Controller SE's android system allows for the installation and customization of 3rd party apps.



Livestream

Smart Controller SE supports livestreaming to a local monitor via the HDMI port or through 3rd party apps downloads.

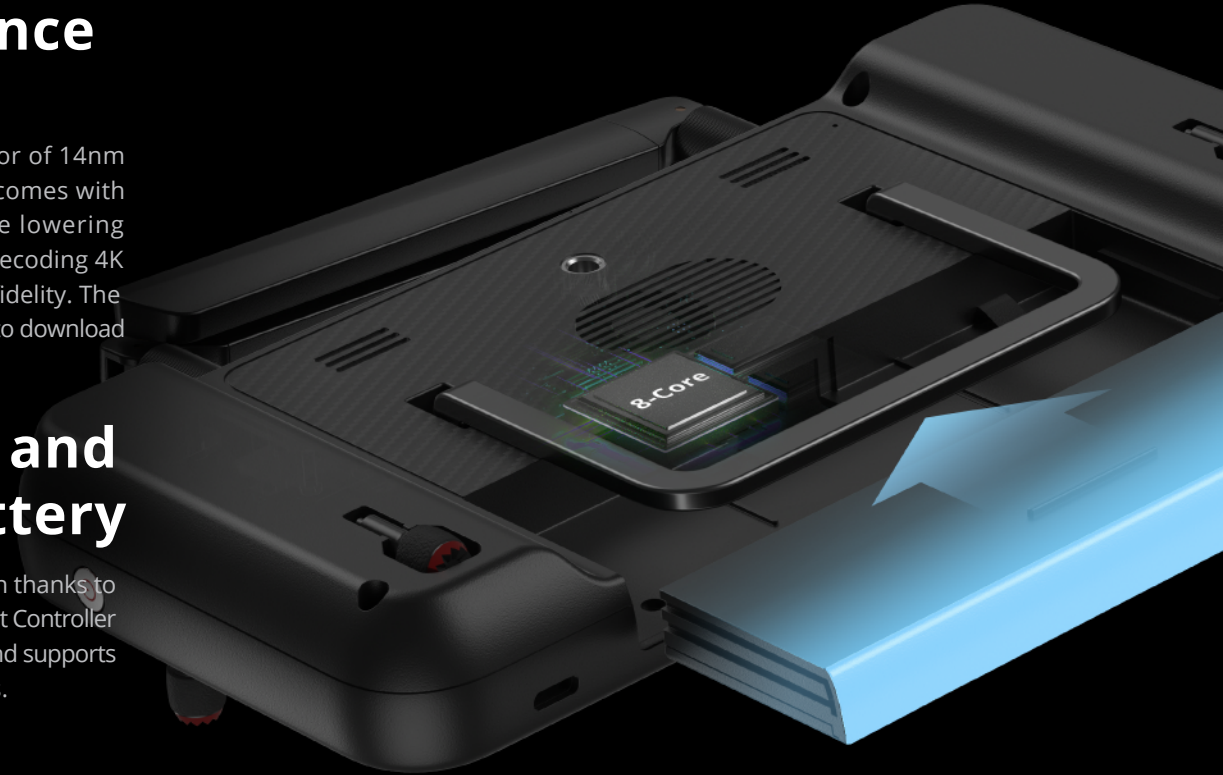


High Performance Hardware

Featuring Qualcomm 8-core processor of 14nm technology, the Smart Controller SE comes with stronger computing capability while lowering power consumption. It is capable of decoding 4K videos and processing audios in high-fidelity. The supporting of Wi-Fi 5 protocol enables it to download third-party applications real fast.

Swift Charging and Removable Battery

Get up to 4 hours of non stop operation thanks to improved processing efficiency. The Smart Controller SE shortens charging time to 1.5 hours and supports quick battery swaps between missions.



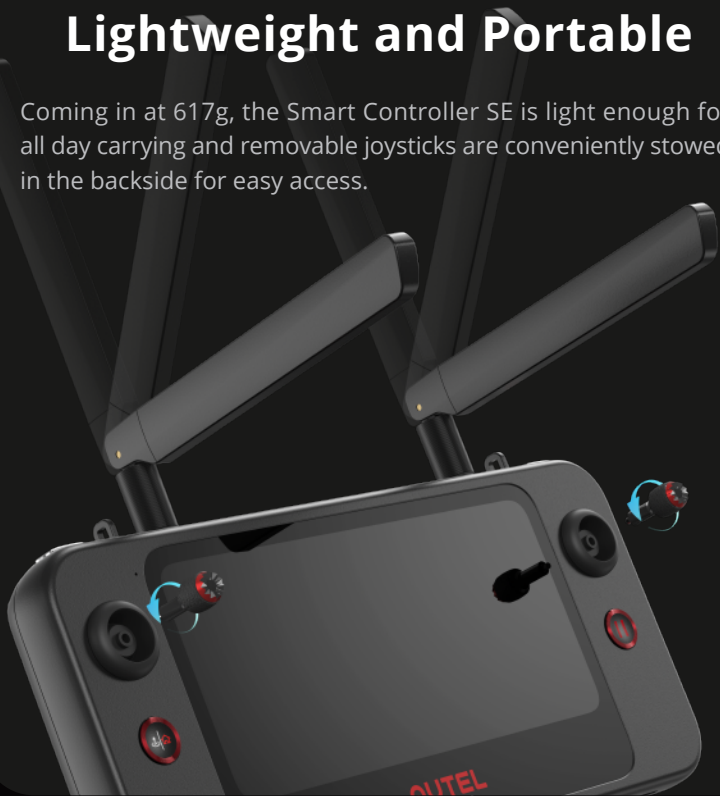
Weather Sealed and Temperature Tolerant

Autel Smart Controller SE has an IP43 against dust and light rain. An operating temperature between -10°C to 40°C enhances reliability of the Smart Controller SE in all seasons.



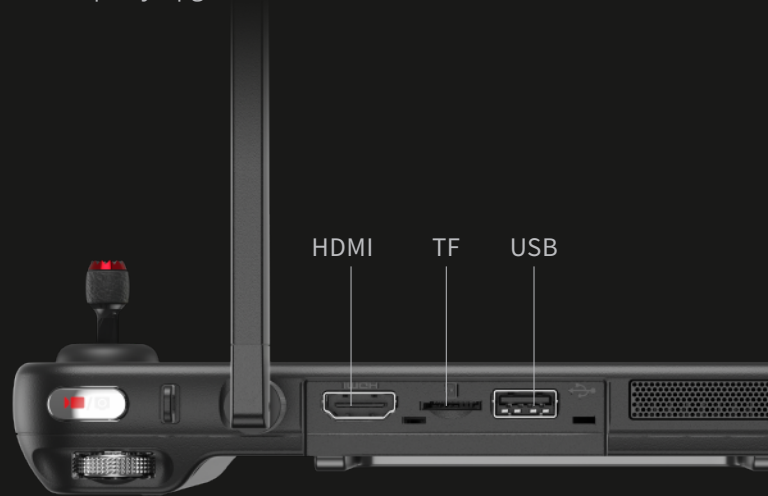
Lightweight and Portable

Coming in at 617g, the Smart Controller SE is light enough for all day carrying and removable joysticks are conveniently stowed in the backside for easy access.



Muti-Ports

HDMI, quick removable TF card, and USB ports solve all your broadcasting, charging, and transfer needs. And SMA compatible connectors for quick replacements or 3rd party upgrades.



Specifications

Operating Frequency	902-928 MHz (FCC only) 2.400-2.4835 GHz 5.725-5.850 GHz (non-Japan) 5.650-5.755 GHz (Japan only)
Max Transmission Distance (Unobstructed, Free of Interference)	FCC: 15 km CE: 8 km
Supported Aircrafts	EVO II Pro V3 EVO II Dual 640T V3 EVO II RTK Series V3 EVO II Enterprise V3
Display Screen	2340x1080 60 fps
Max Brightness	800 nits
Dimensions	226.3x137.7x31.5 mm (antennas folded) 226.3x215.4x31.5 mm (antennas unfolded)
Weight	617 g
Battery	1900 mAh
Operating Time	~2 hours (max. brightness) ~4 hours (50% brightness)
Charging Time	90minutes
Internal Storage	ROM 128 GB + expandable storage via TF card
Operating Temperature	-10 °C to 40 °C (14 °F to 104 °F)
Ingress Protection	IP43



Seattle 425-771-7776 | Tacoma 253-922-6087 | Portland 503-641-3388
Salt Lake City 801-878-9763 | Las Vegas 702-586-1152 | Boise 800-537-6848
www.KukerRanken.com

AUTEL
ROBOTICS

www.autelrobotics.com