

# HYDROLITE PLUS™ Seafloor™

Single and Dual Frequency Echosounder Kits

The **Hydrolite Plus™** is a culmination of Seafloor's 20+ years of developing echosounders for surveyors. Both single and dual frequency versions quickly measure and log depths, making fast work of ponds, rivers, lakes, and more. The HydroLite Plus™ is portable, robust, and designed to survive any field environment.

## BENEFITS

- ▶ Portable, integrated hydrographic survey solution
- ▶ Adapts / mounts to any vessel via transom mount
- ▶ Wireless data transfer direct to data collector
- ▶ Meets IP-65 standards
- ▶ Quickly export XYZ data

## KIT INCLUDES

- ▶ Hydrolite Plus Echosounder Kit
- ▶ HydroLite boat mount / pole kit
- ▶ Rugged shipping case
- ▶ User manual / training manual
- ▶ 1 year warranty and lifetime support

## OPTIONS

- ▶ GNSS Receiver
- ▶ Data Collector / Software
- ▶ PC Data Acquisition
- ▶ Digital Bar Check / Sound Velocity
- ▶ Tide Gauge
- ▶ Telemetry - Vehicle to Shore

## SPECIFICATIONS

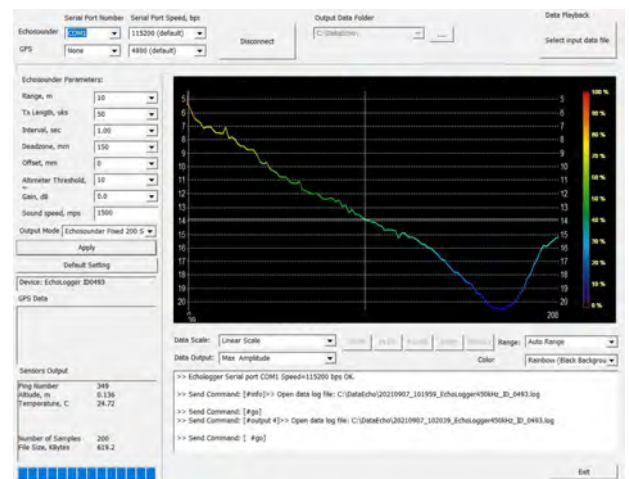
- ▶ Frequency: 200 KHz (single) or 200/30KHz (dual)
- ▶ Beam Width: 7° (single) or 5°/26° (dual)
- ▶ Ping Rate: 100 Hz max (single) or 10Hz max (dual)
- ▶ Depth Accuracy: 1cm/ 0.1% of depth
- ▶ Output formats: NMEA,ASCII,ODOM,ATLAS, Sonarmite
- ▶ Range: Up 200m
- ▶ I/O: Serial,Bluetooth
- ▶ Power: Rechargeable DC 10~75V, 2W max
- ▶ Compatibility: Trimble, Leica,Topcon, Sokkia, Epoch,Carlson,HYPACK,QPS, EIVA, PDS 2000.
- ▶ Topside – 1lbs(0.45kg), 6.5x3.375x1.75” (165.1x 85.72x 44.45mm)
- ▶ Transducer - 1lbs (0.45kg), 5x2.75x3.75” (127x69.85x95.25mm)
- ▶ Transom Mount: 4lbs (1.81kg), 11x5x8” (279x127x203.2mm)



Dual Frequency Echosounder Unit



Rugged Shipping Case



Custom User Interface with Real-Time Sonar Echogram



Unit can be integrated into remote / autonomous survey vessels



A TRADITION IN PRECISION

Seattle 425-771-7776 | Tacoma 253-922-6087  
 Portland 503-641-3388 | Salt Lake City 801-878-9763  
 St. George 801-878-9763 | Las Vegas 702-586-1152  
**www.KukerRanken.com**

Seafloor Systems, Inc. | 4415 Commodity Way | Shingle Springs, CA 95682 | USA

info@seafloor.com | www.seaflorsystems.com