

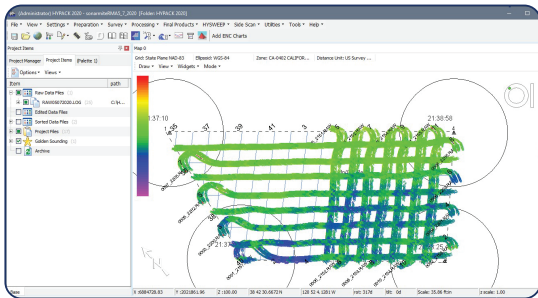
# Seafloor™

## AUTONAV PLUS

Long Range Hydrographic Data Telemetry System



**AutoNav Plus™ system fits small to large USVs**



**Hypack Software receiving depth and position data onshore in real time**



**HyDrone™ USV equipped with AutoNav Plus™ / Onshore computer setup**



A TRADITION IN PRECISION

Seattle 425-771-7776  
 Tacoma 253-922-6087 | Portland 503-641-3388  
 Salt Lake City 801-878-9763 | Las Vegas 702-586-1152  
 Boise 800-537-6848  
[www.KukerRanken.com](http://www.KukerRanken.com)

The **AutoNav Plus™** combines the **AutoNav™** control system, which enables USVs to navigate pre-programmed survey routes, with a long range communication control system and built-in computer for data logging and control of 3rd party applications. The system was designed to log GPS and echosounder data locally on the USV's onboard computer, utilizing hydrographic survey software or other Windows-based data collection software. Real-time monitoring and data acquisition can be viewed from the onshore computer, streamlining survey missions in challenging waters.

### BENEFITS

- Enables real-time monitoring of survey & track lines
- Data logged to onboard PC
- Self-contained
- Compatible with any Seafloor USV or crewed vessel
- CAA (Collision Avoidance Assist) Adaptable

### SPECIFICATIONS

- Serial Ports: 2 (GPS and Coms)
- Range: 1km with telemetry
- Communications: 802.11g WiFi
- Environmental: IP 66
- Size: 11.5 x 3.5 x 6.5 in / 292 x 89 x 165 mm
- Weight: 7 lbs / 3.1 kg

### KIT INCLUDES

- AutoNav Plus Computer System
- FrSky™ Remote Control
- 2 x Receiver Antennas
- WiFi Bridge Antenna
- WiFi Directional Antenna
- GPS Serial Cable
- Sonarmite Serial Cable
- Port & Starboard AutoNav Cables
- External Power Cable

**Seafloor Systems, Incorporated | 4415 Commodity Way | Shingle Springs, CA 95682 | USA**

[info@seafloorsystems.com](mailto:info@seafloorsystems.com) | [www.seafloorsystems.com](http://www.seafloorsystems.com)